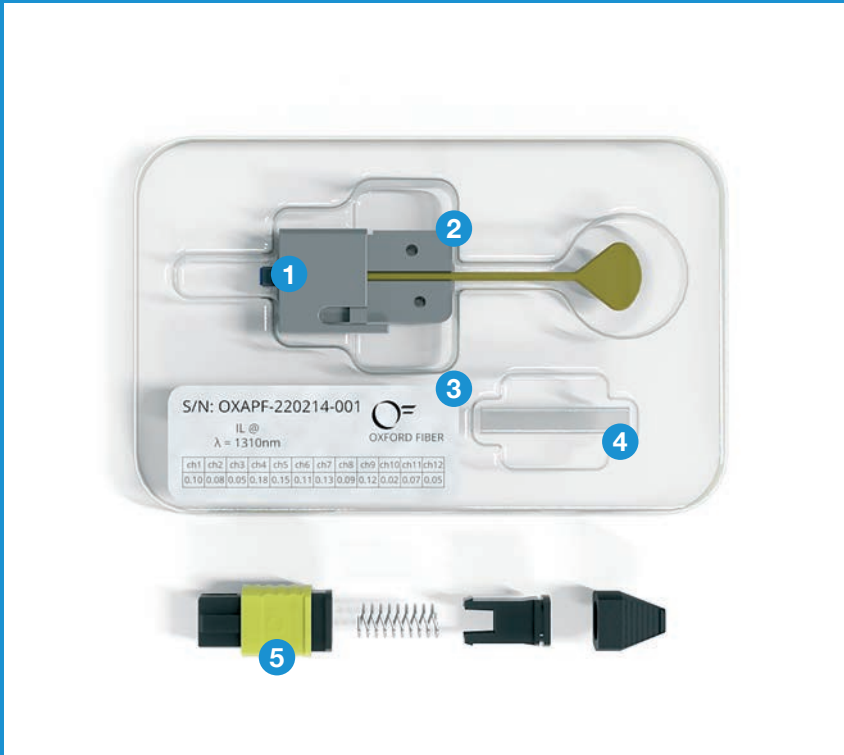


# APC-MPO

## Splice-On Connector



### Key Features:

- Fusion splice-on MPO connector
- Field-installable, no adhesive or crimps
- Factory-quality termination
- Insertion Loss < 0.25dB
- Return Loss < -60dB
- Compatible with a range of fusion splicers
- Operating temperature of -40°C to +75°C

- 1 Pre-prepared ferrule with cleaved fiber stubs ready for fusion splicing
- 2 Holder
- 3 Insertion Loss Measurements
- 4 Splice Protection Sleeve
- 5 Housing Components

Oxford Fiber® offers the high performance OXFORD APC-MPO splice-on connector designed for easy field termination of ribbon fiber cables.

The Oxford APC-MPO connector is designed to have similar performance as a factory-terminated MPO assembly. Its simple design gives repeatable and reliable results. The splice-on nature of the connector allows the user to customise their network structure in FTTP, data centers, RAN and Cable TV settings.

The pre-prepared ferrule comes in a sealed package ready for fusion splicing to ribbon cables. The connector can be spliced by a range of fusion splicers using standard fiber tooling.



OXFORD FIBER®

Oxford Fiber Ltd  
Sir Frank Whittle Business Centre  
Gt. Central Way, Butlers Leap  
Rugby, CV21 3XH, UK

Tel: +44 (0) 1788 226 010  
Website [www.oxfordfiber.com](http://www.oxfordfiber.com)  
Email [sales@oxfordfiber.com](mailto:sales@oxfordfiber.com)

# APC-MPO

## Splice-On Connector

### Applications

- MDU FTTP Cabling
- Radio Access Networks
- Cable TV
- Harsh Environment
- Wireless
- Optical backplane interconnect

### Connector Details

- **Splice-On connector type:** APC-MPO: 12 channel
- **Fiber Type:** 12-fiber Single Mode
- **Male or Female connectors;** A-B polarity changeable at installation
- Fusion splice connection and protection sleeve between cable and connector

### Specifications

#### Low Loss

Parameter	Fiber Type	Value
IL*	Single Mode	< 0.25dB
RL*	Single Mode	< -60dB

#### Standard Loss

Parameter	Fiber Type	Value
IL*	Single Mode	< 0.70dB
RL*	Single Mode	< -60dB

\*Connection to conventional APC-MPO, measured at 1310nm

### Ordering Information

OXFORD-MPO12	Gender <u>A</u>	Endface Type <u>BB</u>	Fiber Type <u>CCCC</u>	Cable Media <u>DDDD</u>	Splicer Type <u>EE</u>	Pack Size <u>FF</u>
	Male <u>M</u>	Angle polished, physical contact <u>AP</u>	Single Mode Low Loss <u>SMLL</u>	Bare Ribbon <u>BR</u>	Sumitomo <u>FSUM</u>	#Connectors per pack <u>04</u>
	Female <u>F</u>		Single Mode Standard Loss <u>SMSL</u>			

## OXFORD-APC-MPO

Example: OXFORD-MPO12-F-AP-SMLL-BR-FSUM-04 = 12-fiber splice-on MPO connector, female, angle-polished, single mode low-loss, spliced to bare ribbon with Sumitomo splicer, 4 connectors in pack



OXFORD FIBER®